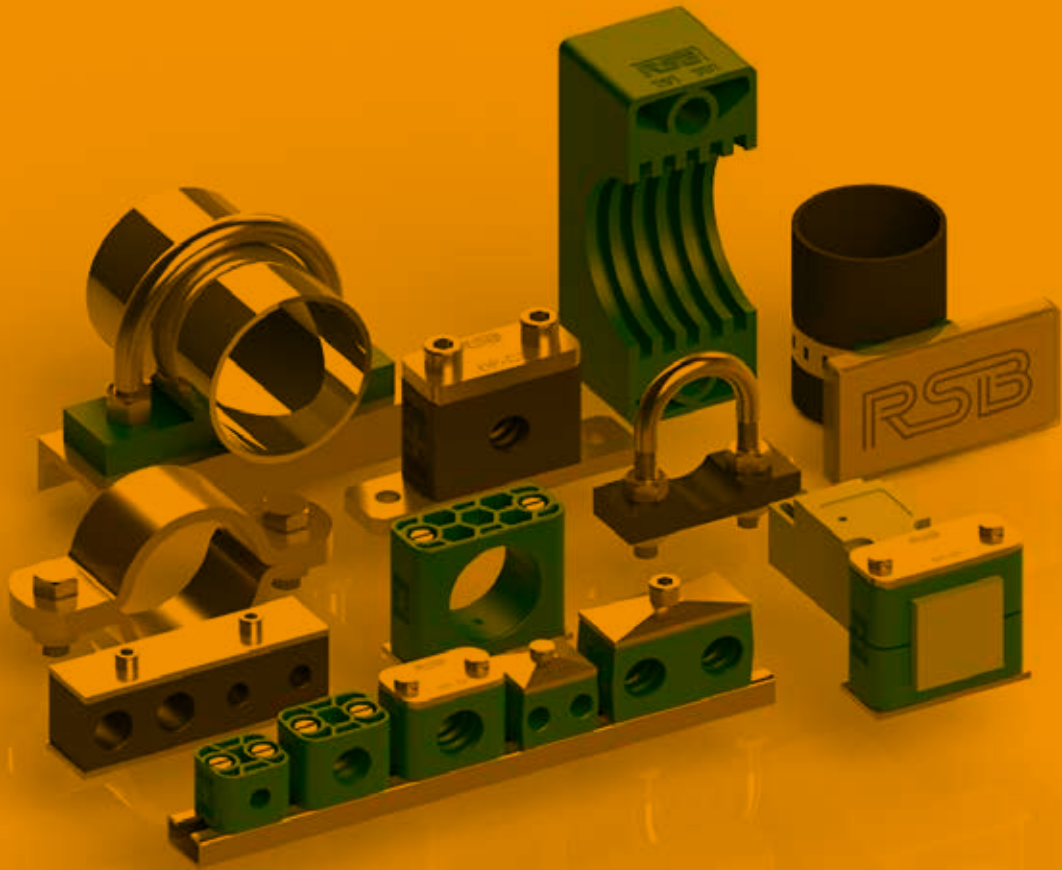




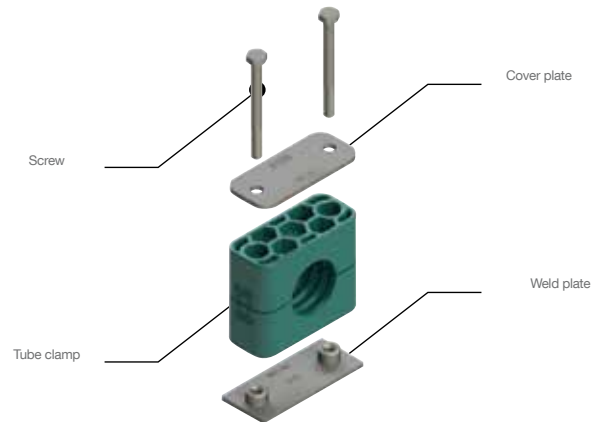
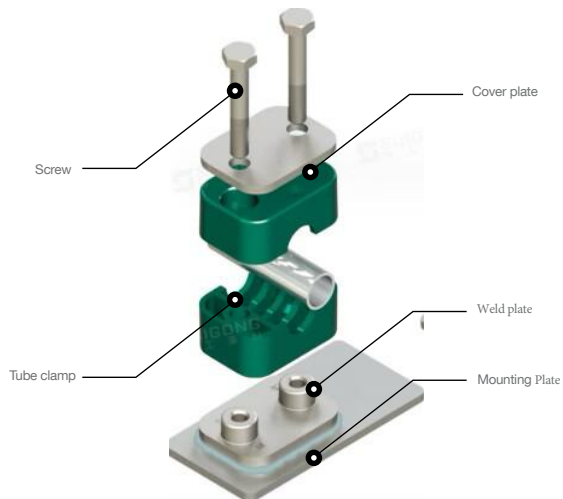
FASTENING SYSTEMS CATALOGUE



ASSEMBLY INSTRUCTION

Assembly on metal welding plates

Place welding plates on a base appropriate for the load. Make sure that the clamps are properly aligned. Clamp lower clamp half onto welding plate, insert tube, place upper clamp half onto lower half and fasten with the screws. Attention must be paid to the prestress (after completed assembly, clamp halves must not be in contact) Do not weld with fitted plastic clamp. Extended welding plates may be screwfastened to the base.

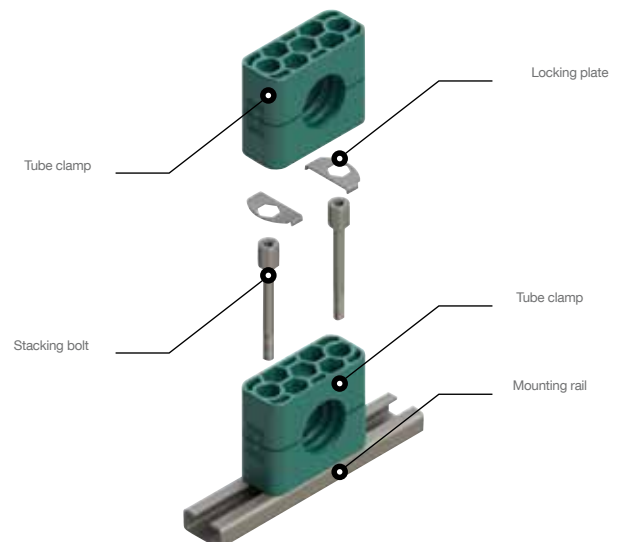
**Assembly on mounting Plate**

Mounting plates are available in different dimensions as required. Weld on mounting plate or screw-fasten with fastening nut. For heavy duty construction series, nuts are simply pushed in. Clamp lower clamp half on mounting plate nuts, insert tube, place upper clamp half onto lower half and fasten with the screws. Before fastening the screws, the clamp may still be positioned. Attention must be paid to the prestress (after completed assembly, the clamp halves must not be in contact)

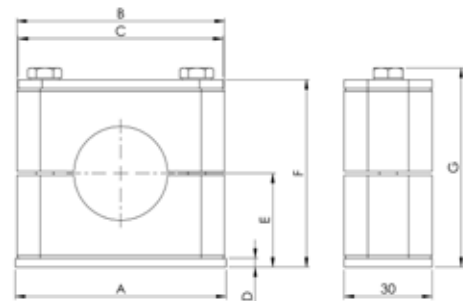
Weld Plate , Mounting Plate , Screw , Cover plate - SS316
Tube Clamp - Polypropylene

Stacking assembly

RSB-Clamps allow the assembly of multiple clamps of the same construction size and of different tube diameters one above the other. The construction assembly is carried out with special fixing screws that are secured against twisting by applying a locking plate. Clamp lower clamp half on welding plate or mounting rail respectively, insert tube, place upper clamp half on lower half and fasten with fixing screws. The fixing screw juts out from the upper clamp half. The application of a locking plate securely fastens the fixing screw and prevents twisting. Clamp on second clamp half on to the fixing screws etc.



TUBE CLAMPS



DIMENSIONS AND WEIGHTS OF TUBE CLAMPS, COMPLETE (MM)

SIZE	A	B	C	D	E		F		G		WEIGHT / 10 PCS. RAPR3-xxx (kg)
					Grooved	Smooth	Grooved	Smooth	Grooved	Smooth	
0	30	28	28	3	16,5	16,2	33	32,4	37	36,4	0,66
1	36	34	34	3	16,5	16,2	33	32,4	37	36,4	0,82
2	42	42	40	3	19,5	19,1	39	38,2	43	42,2	0,98
3	50	49	48	3	20,5	20	41	40	45	44	1,14
4	59	59	57	3	24	23,4	48	46,8	52	50,8	1,36
5	72	71	70	3	32	31,4	64	62,8	68	66,8	1,83
6	88	86	86	3	36	35,4	72	70,8	76	74,8	2,22
7	122	121	120	5	51,8	51	103,6	102	107,6	106	4,55
8	148	147	146	5	63,8	63	127,6	126	131,6	130	6,18

The weight was determined with the smallest diameter (see catalogue) and the standard model of the steel parts of the respective quantity in bulk.

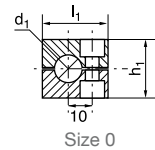
Order codes for clamp-halves:

Polypropylene **RAPR**
inside smooth **RAPG²⁾**
Polyamide 6 **RANR**
inside smooth **RANG²⁾**
Rubber **RAVR^{3) 4)}**
RAVG^{2) 3)}
RAAR¹⁾

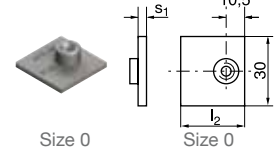
Aluminium
Replace standard abbreviation
RAPR in column "clamp-halves" as required.



Size 0



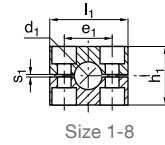
Size 0



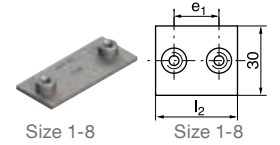
Size 0



Size 1-8



Size 1-8



Size 1-8

SIZE	O.D. mm d_1	Tube NB	Inch O.D.	RAPR 1 part / 2 clamp-halves	RAPR-... 2 clamp-halves				APK-A Weld plate			
					l_1	h_1	e_1	s_1	e_1	l_2	s_1	
0	4	G 1/8	1/4 5/16 3/8	RAPR-004 RAPR-006 RAPR-006,4 RAPR-008 RAPR-009,5 RAPR-010 RAPR-012	28	27	-	0,6	APK-A 0	-	30	3
	6											
	6,4											
	8											
	9,5											
	10											
1	12	G 1/8	1/4 5/16 3/8	RAPR-104 RAPR-106 RAPR-106,4 RAPR-108 RAPR-109,5 RAPR-110 RAPR-112	34	27	20	0,6	APK-A 1	20	36	3
	4											
	6											
	6,4											
	8											
	9,5											
2	10	G 1/4 G 3/8	1/2 5/8	RAPR-212,7 RAPR-213,5 RAPR-214 RAPR-215 RAPR-216 RAPR-217,2 RAPR-218	42	33	26	0,8	APK-A 2	26	42	3
	12,7											
	13,5											
	14											
	15											
	16											
3	17,2	G 1/2	3/4 1	RAPR-319 RAPR-320 RAPR-321,3 RAPR-322 RAPR-323 RAPR-325 RAPR-325,4	49	35	33	1	APK-A 3	33	50	3
	18											
	19											
	20											
	21,3											
	22											
4	23	G 3/4	1 1/4	RAPR-426,9 RAPR-428 RAPR-430	59	42	40	1,2	APK-A 4	40	59	3
	25											
	25,4											
	26,9											
	28											
	30											
5	32	G 1 G 1 1/4	1 1/2	RAPR-532 RAPR-533,7 RAPR-535 RAPR-538 RAPR-540 RAPR-542	71	58	52	1,2	APK-A 5	52	72	3
	33,7											
	35											
	38											
	40											
	42											
6	44,5	G 1 1/2	1 3/4 2	RAPR-644,5 RAPR-645 RAPR-648 RAPR-650 RAPR-650,8 RAPR-652 RAPR-654 RAPR-655 RAPR-657	86	66	66	1,2	APK-A 6	66	88	3
	45											
	48											
	50											
	50,8											
	52											
7	54	G 2 G 2 1/2	2 1/4 2 1/2 2 3/4 3	RAPR-757,2 RAPR-760,3 RAPR-763,5 RAPR-770 RAPR-773 RAPR-776,1	121	93,6	94	1,6	APK-A 7	94	122	5
	55											
	57											
	57,2											
	60,3											
	63,5											
8	70	G 3 G 3 1/2	3 1/2 4	RAPR 888,9 RAPR 8101,8	147	117,6	120	1,6	APK-A 8	120	148	5
	73											
	76,1											

All metal parts available in stainless steel. ¹⁾Aluminium in sizes 0 to 6 ²⁾without prestress ³⁾When assembling solid rubber tube clamps, cover plates, hexagon screws and locking washers must be used ⁴⁾Rubber in sizes 1 to 5

